

Midwest Electric Products, Inc.

# 5" x 7" Attachable Post Mini-Post Extension

- Attachable to any 5" x 7" power outlet
- Available in 24", 36" and 48" lengths
- Green or grey paint
- Pad mount or earth-burial mounting
- Ideal for landscaping, motor block and septic tank control power applications
- Minimizes distributor stocking requirements
- Cord guard and pad mount/post stabilizer kit available
- G90 painted galvanized steel construction
- Plated mounting and assembly hardware included



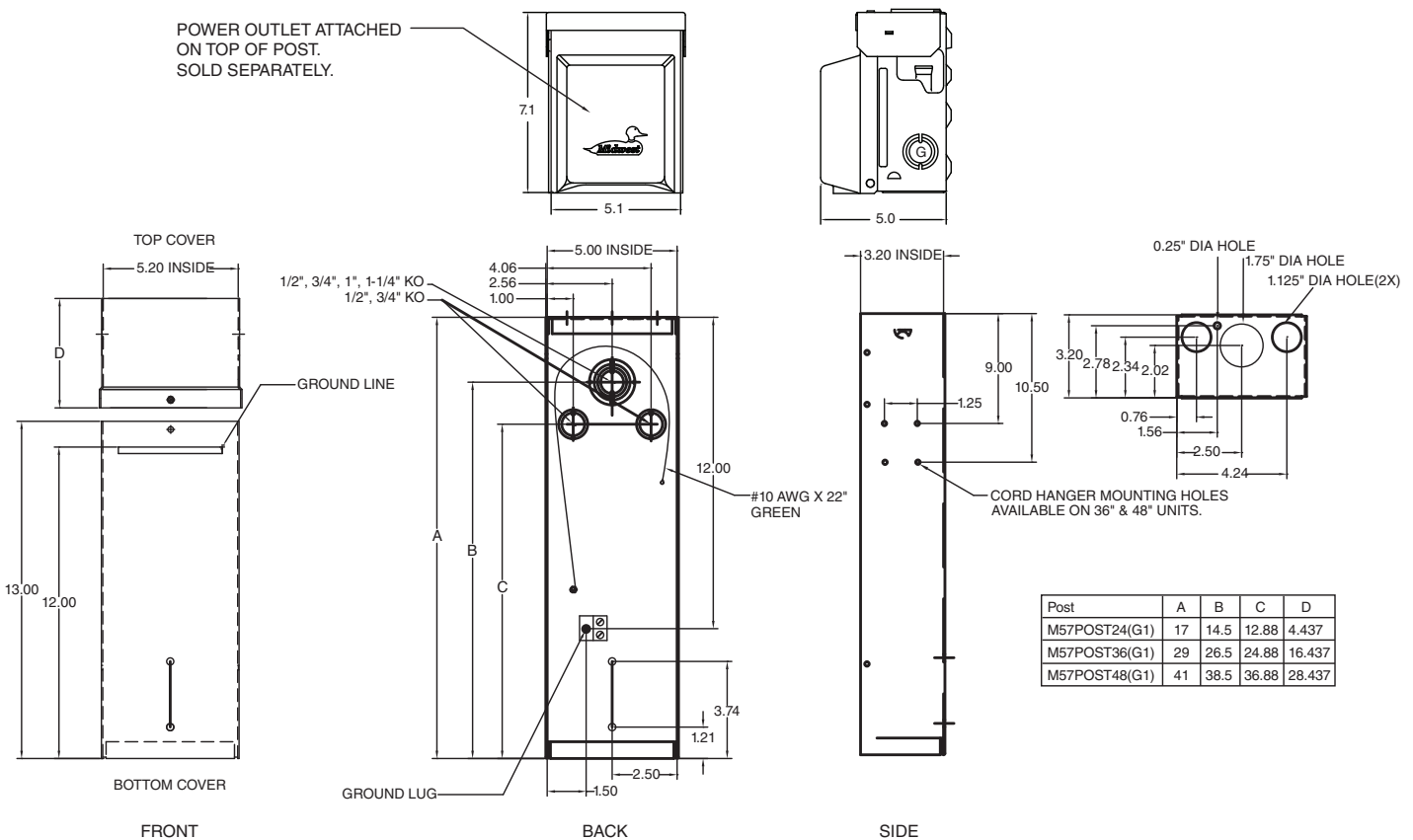
# 5" x 7" Attachable Post Mini-Post Extension

## Technical Data

Enclosure Type	Color	Attachable Post					Accessory Kits <sup>1</sup>	
		Cat No.	Dimensions (inches)			Weight (lbs)	Cat. No.	Weight (lbs)
			Height	Width	Depth			
Outdoor (NEMA 3R)	Grey	M57POST24	17	5	3.2	6	M57PT24ACC	2
		M57POST36	29	5	3.2	9.5	M57PT36ACC <sup>2</sup>	4
		M57POST48	41	5	3.2	12.5	M57PT48ACC <sup>2</sup>	5.5
	Green	M57POST24G1	17	5	3.2	6	M57PT24ACCG1	2
		M57POST36G1	29	5	3.2	9.5	M57PT36ACCG1 <sup>2</sup>	4
		M57POST48G1	41	5	3.2	12.5	M57PT48ACCG1 <sup>2</sup>	5.5

<sup>1</sup> Includes cord guard and pad mount stablizer feet

<sup>2</sup> Also includes cord hanger



Information provided is subject to change without notice. Please verify all details with Midwest Electric Products. All values are design or typical values when measured under laboratory conditions, and Midwest makes no warranty or guarantee, express or implied, that such performance will be obtained under end-use conditions.

Midwest Electric Products, Inc.  
PO Box 910 • 58155 240th Street  
Mankato, MN 56002-4414  
Customer Service: 866-685-0577  
Fax: 800-705-2905

[www.midwestelectric.com](http://www.midwestelectric.com)

MET-001B (08/11)

