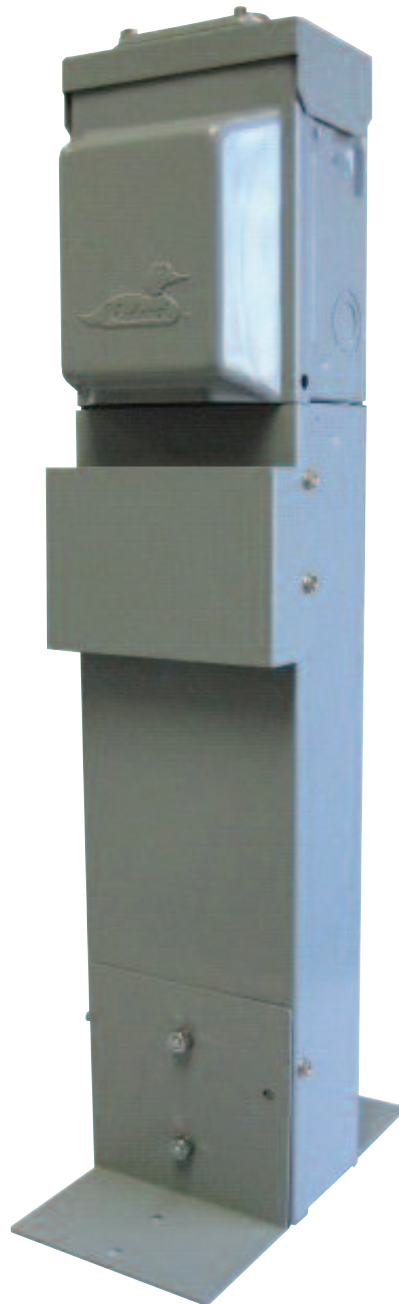


Midwest Electric Products, Inc.

5" x 7" Attachable Post Mini-Post Extension

- Attachable to any 5" x 7" power outlet
- Available in 24", 36" and 48" lengths
- Green or grey paint
- Pad mount or earth-burial mounting
- Ideal for landscaping, motor block and septic tank control power applications
- Minimizes distributor stocking requirements
- Cord guard and pad mount/post stabilizer kit available
- G90 painted galvanized steel construction
- Plated mounting and assembly hardware included



5" x 7" Attachable Post Mini-Post Extension

Technical Data

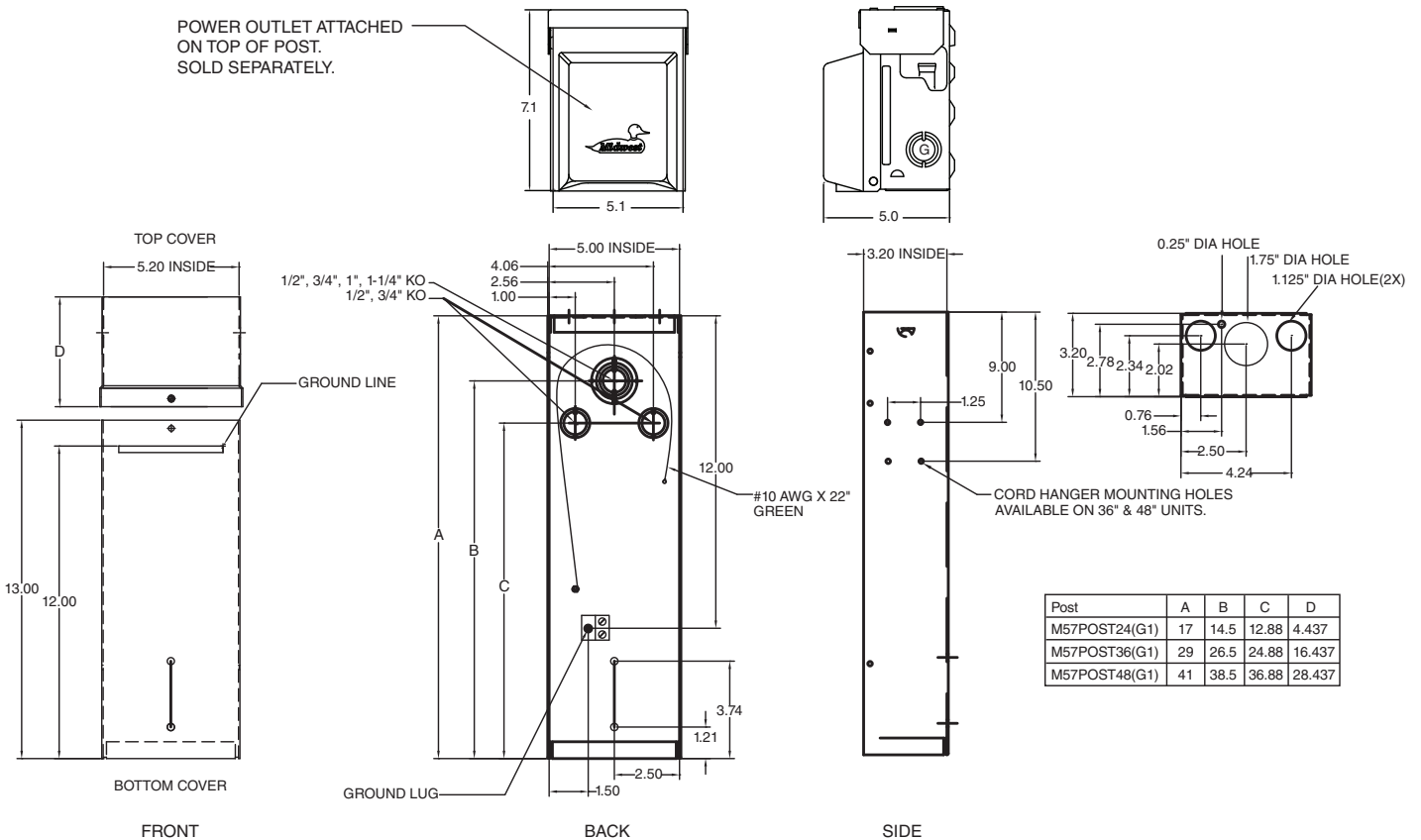
Enclosure Type	Color	Cat. No.	Dimensions (inches)			Weight (lbs)
			Height	Width	Depth	
Outdoor (NEMA 3R)	Grey	M57POST24	17	5	3.2	6
		M57POST36	29			9.5
		M57POST48	41			12.5
	Green	M57POST24G1	17			6
		M57POST36G1	29			9.5
		M57POST48G1	41			12.5

Accessory Kits

Includes cord guard and pad mount stabilizer feet

Color	For use with Mini-Post Cat. No.	Accessory Kit Cat. No.	Weight (lbs)
Grey	M57POST24	M57PT24ACC	2
	M57POST36	M57PT36ACC*	4
	M57POST48	M57PT48ACC*	5.5
Green	M57POST24G1	M57PT24ACCG1	2
	M57POST36G1	M57PT36ACCG1*	4
	M57POST48G1	M57PT48ACCG1*	5.5

*Includes cord hanger



Information provided is subject to change without notice. Please verify all details with Midwest Electric Products. All values are design or typical values when measured under laboratory conditions, and Midwest makes no warranty or guarantee, express or implied, that such performance will be obtained under end-use conditions.

Midwest Electric Products, Inc.
PO Box 910 • 58155 240th Street
Mankato, MN 56002-4414
Customer Service: 866-685-0577
Fax: 804-965-1041

www.midwestelectric.com

MET-001 (05/10)

